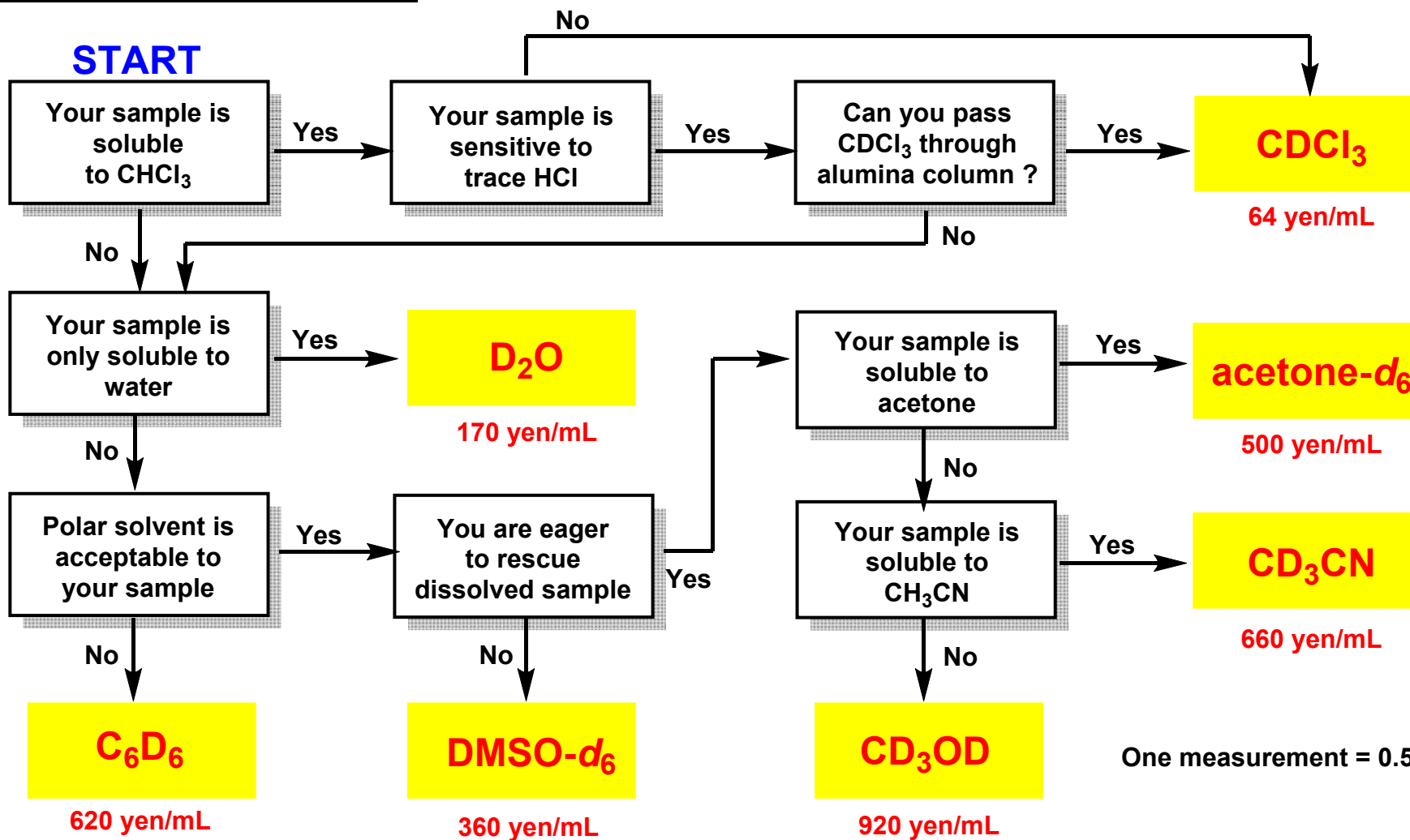


How to select NMR solvent

(Prices are cited from Kanto Kagaku Catalog)



One measurement = 0.5-0.8 mL

Chemical shift overlapping is not considered in this chart.

Do not use D-solvents listed below except for special experiments (very very expensive).

toluene-d₈
1700 yen/mL

CD₂Cl₂
1700 yen/mL

THF-d₇
6000 yen/mL

DMF-d₇
8000 yen/mL